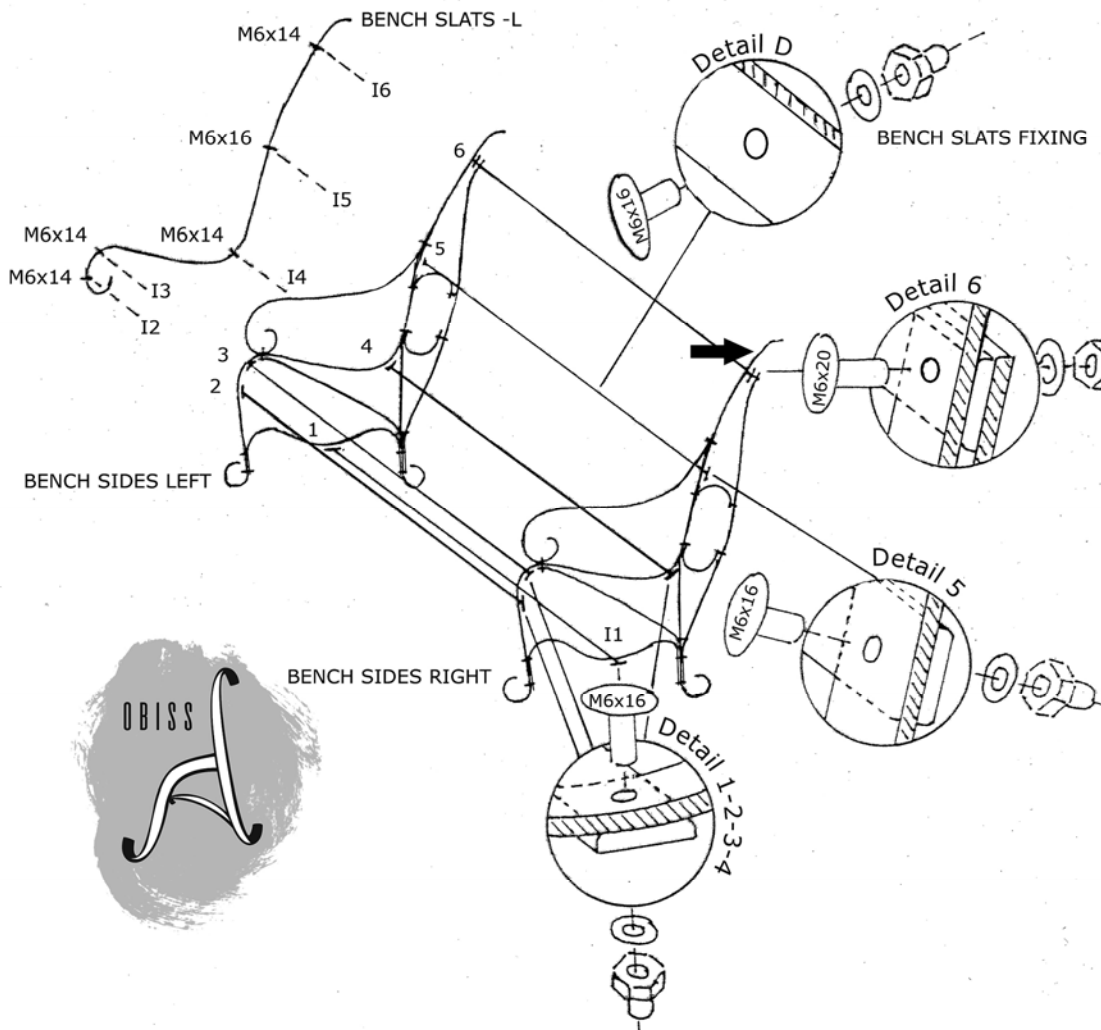


OBISS Benches



Assembly instructions

- 1.) - Connect supports $-(I_{1-5})$ with bolt connections M6x16 to the side of the side slats. (Supports $I_{1-2-3-4-5}$, according to drawing) It is the best to do so in two persons.
 - Connect support $-(I_6)$: slightly step on the front leg of the bench and push on the top edge of the side slat in the direction of arrow. Release bolt connection (Detail 6).
 - insert support I_6 and tie bolt connection M6x20 according to (Det.6).
- 2.) - Connect all bench slats with attached bolt connections M6x16 to the bench supports - the best way is from left to right.
 - Bolt connection on the support I_5-I_6 tight only slightly by hand, in this phase of the assembly.
- 3.) - After the assembly of all slats tight, fast also all bolt connections on support- (I_{5-6}) .