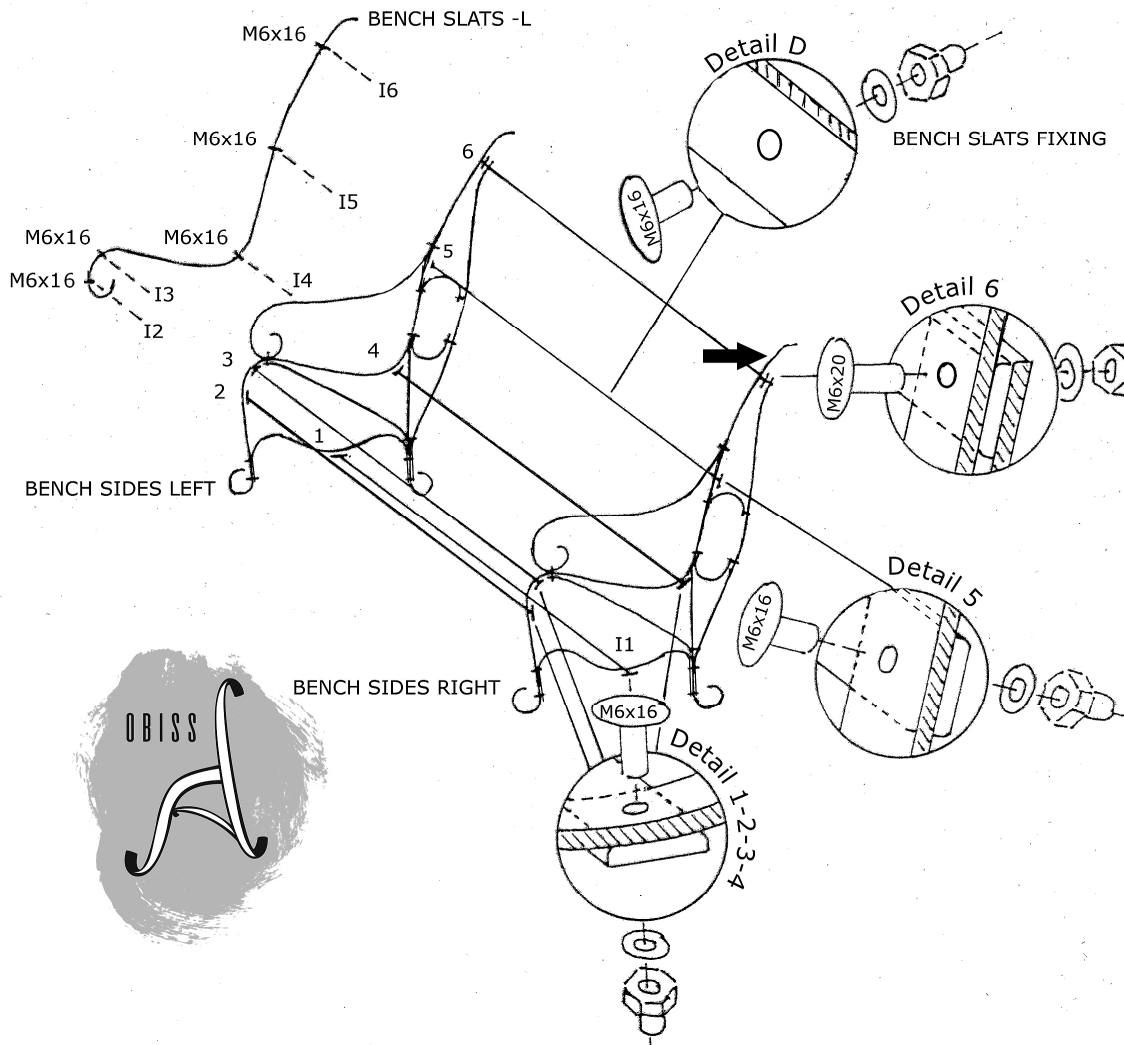


OBISS Benches



Assembly instructions

- 1.) - Connect the cross bars - (I₁₋₅) with bolt connections M6x16 to the sides of the bench. (Cross bar I₁₋₂₋₃₋₄₋₅, according to drawing) It is the best to do so with two persons.
 - Connect the cross bar -(I₆) : slightly step on the front leg of the bench and push on the top edge of the bench side in the direction of the arrow. Release the bolt connection (Detail 6).
 - insert cross bar I6 and fix the bolt connection M6x20 according to Detail 6.
- 2.) - Connect all bench slats with attached bolt connections M6x16 to the cross bars of the bench - the best way is from left to right. Start with the cross bar I₂ and I₃.
 - Tight the bolt connection on the cross bar I₅-I₆ only slightly by hand, in this phase of the assembly.
- 3.) - After the assembly of all slats, fasten also all bolt connections at the cross bars-(I₅₋₆).

Comment: The assembly of our coffeetable is a bit different. First fix the lowest cross bar and then fix the 3 upper cross bars to the table sides. Now place all 8 slats on the cross bars, fix the 4th cross bar and now fasten all bolt connections of the slats.